



1 Landsberg Terrace

Failsworth, Manchester, M35 9LY

Offers Over £290,000

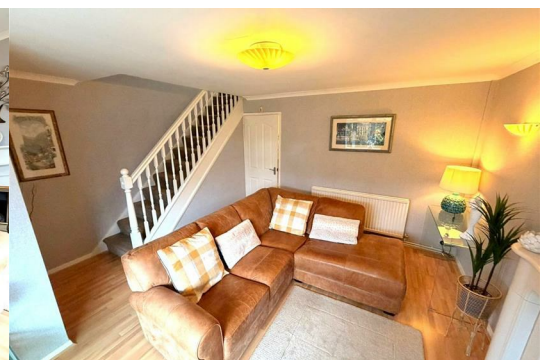
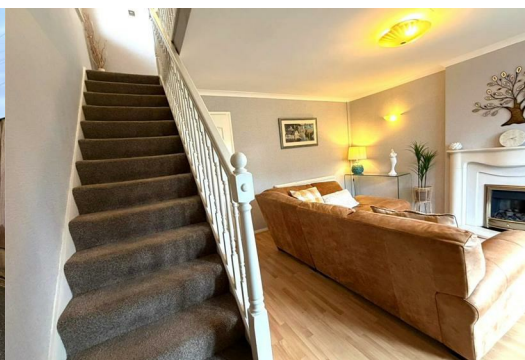


Situated in a highly sought-after residential area of Failsworth, this immaculately presented three-bedroom semi-detached property offers an exceptional opportunity for first-time buyers and growing families alike. Ideally positioned close to well-regarded local schools, a range of amenities, and excellent transport links including the North West motorway network, the home combines convenience with comfortable modern living.

Internally, the beautifully maintained accommodation comprises a welcoming lounge & dining room to the ground floor, perfect for both relaxing and entertaining, alongside a stunning contemporary kitchen finished to a high standard.

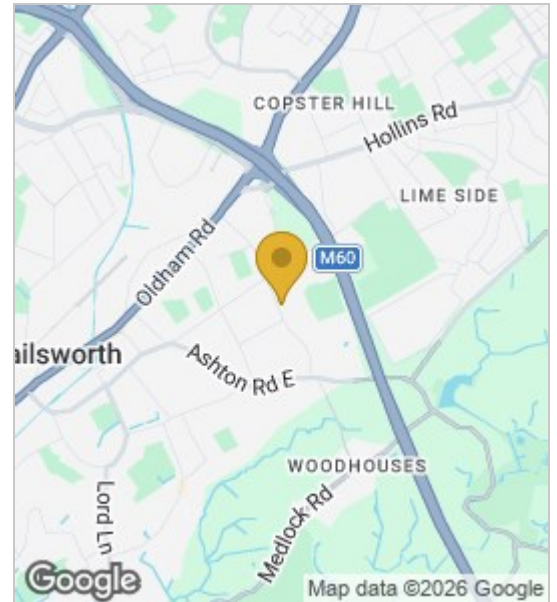
To the first floor, the property offers three well-proportioned bedrooms, including two generous doubles and a single bedroom, complemented by a stylish modern family bathroom.

Externally, the home continues to impress with a driveway to the side providing off-road parking and access to a garage. To the rear, there is an enclosed garden featuring a lawn



- Living Room
- Dinning Room
- Kitchen
- Bedroom 1
- Bedroom 2
- Bedroom 3
- Bathroom

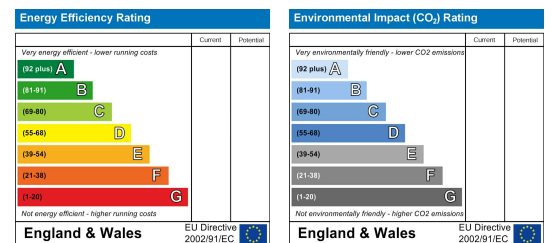
Area Map



Floor Plans



Energy Efficiency Graph



These particulars, whilst believed to be accurate are set out as a general outline only for guidance and do not constitute any part of an offer or contract. Intending purchasers should not rely on them as statements of representation of fact, but must satisfy themselves by inspection or otherwise as to their accuracy. No person in this firm's employment has the authority to make or give any representation or warranty in respect of the property.

